

Security Planning: Creating a Security Plan for Your Cannabis Business

Every cannabis business, regardless if it's a dispensary, retail, transport, or growers needs to develop and provide a detailed security plan in order to get licensed and maintain that plan going forward. Regulations vary by state and can be very complicated. A good Security Plan is made up of three parts: 1) the security management plan, 2) the security operations plan, and 3) the security technology plan. When done correctly your plan should be able to help you get through the licensing process without setbacks, provide security procedures to deploy and follow as you go forward, mitigate business risks and help control the overall costs of implementation.



The Security Management Plan

This section should detail your plan to secure all assets of the business. It will include the identification of roles, (an organization chart) which would typically include the compliance officer, the security manager and the facilities manager and their roles as part of the overall security plan for your business. Be careful not to confuse this part of your plan with providing how the security functions will be performed, and the applicable policies and procedures,

these are covered as part of the security operations plan. The security management plan should include how you plan to control and secure the facility, for example: a) how you will be deploying access control measures, b) the facilities perimeter will have video surveillance deployed, c) all entrances will be access controlled and d) the facility will have an integrated intrusion detection system deployed covering all access points to name a few.

The Security Operations Plan

The security operations plan is where you should be detailing the procedures that you will have in place to protect and secure your facility, employees, and customers. This will be a very detailed part of your security plan and will include: a) Emergency Security Action Plan, b) procedures for handling armed robbery, burglary, c) cash management, cash storage d) employee background checks, employee identification, employee access levels e) key issuance, key return, f) computer security, and

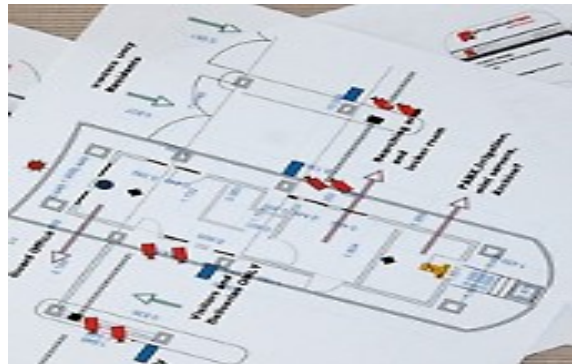




g) security involvement in product transfers in/out of the building. There are many other areas for consideration and included in your operations plan, each requiring you to identify how each of those concerns will be handled.

The Security Technology Plan

This part of your plan details what security technologies you will be using and where and how you will be deploying them throughout your business. It is in this section you will need to show a building diagram (floorplan) and include the locations for your cameras, alarms, access control devices, and a security lighting plan for both the interior and exterior of the facility. Other considerations in this part of your plan should include what recording and storage protocols will be used, how and where locks, safes and vaults will be deployed and what is your plan for security equipment maintenance.



At the end of the plan, you will typically include an appendix section that would have a) security access logs, b) visitors or non-employee log, c) shipping manifests and any other sample documentation required.

How To Bring Your Plan Together

There is more to putting a security plan together than marking up a floor plan with camera locations and copying the minimum guidelines from your states commission web site. Each business is different and unique to its type and location. The use of a professional security consultant will help provide you the best security plan for your business. Security Consultants are not to be confused with security system integrators or equipment providers. Integrators and equipment providers are limited in their experience of providing a full security plan, and have a biased toward what products to use, which are usually steered toward the products they provide and not necessarily the best solution for your application.

The professional security consultant has the needed experience and ability to pull it all together for you, and provide an “unbiased” solution that’s best for your business. The best security consultants are those that can help you through every phase of the process from the site risk assessment, initial design and writing the plan, assisting in getting you through the licensing process (including sitting alongside you at town meetings to present the plan), implementing the plan and helping you maintain it as you go forward. Ultimately the use of a security consultant will make sure you have the expertise you need to create an effective security plan which will allow you to focus on starting, growing and managing your business.



Smart Security Partners
26 Buttermilk Way, Uxbridge Ma 01569
+1 508 887 6923
www.smartsecuritypartners.com

